

INTIEL ***THE ELECTRONICS ON YOUR SIDE***


**CONTROLLER FOR AUTOMATIC CLEANING OF WATER
FILTERS**

AQUA FILTER - INT010

USER'S GUIDE



**10, str. Major Kolontaevski
8200 POMORIE
BULGARIA
www.intiel.com
e-mail: office.intiel@gmail.com**

 **Safety instructions:**

- Before installation, check the integrity of the unit and its connecting wires.
- In case of damaged can not be mounted to the removing of the fault.
- The installation and disassembly of the unit must be carried out by qualified personnel who have previously read the product manual.
- Mount in a dry and ventilated place away from heat sources and flammable gases or liquids.
- Make sure that the mains voltage matches the voltage on the rating plate of the unit.
- Use power consumers that match the power output of the appliance.
- In the event of malfunctioning, switch off the appliance immediately and seek authorized service for repair.
- In case of fire, use a fire extinguisher.
- For the purpose of environmental protection, do not throw away electrical appliances and their packaging marked with a symbol

crossed bin



Contents of the package:

- **The controller**
- **SCAME box**
- **Magnet Valve**
- **User guide (warranty card)**

I. Application

The controller is designed for automatic cleaning of water filters without the need for a user.

Compatible with water filters of the type: Atlas Filtri Hydra, Hydra DS, Hydra DUO / TRIO, Hydra RAINMASTER, Plus 3P, DP, DP DS, K DP, DP BIG, etc.

II. Way of working

The automated cleaning of the filter guarantees the longer life of the filter element, guarantees that the filter is not clogged and hence the reliable operation of the consumers on the warehouse, such as dishwashers, washing machines and more.

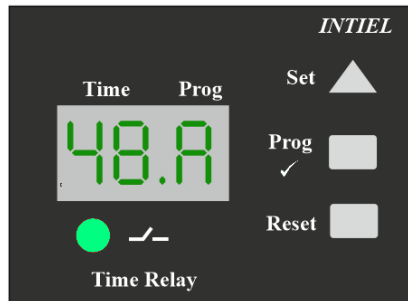
The controller controls the cleaning of the filter by giving a signal to the magnet valve of the backwash for a specified period of time, the backwash is automatically switched off after the set backwash time has elapsed.

The frequency of flushing and the time of flushing depends on the quality and consumption of water.

III. Indicators and buttons

The controller has an LED indication of the operating mode and time interval as well as programming buttons.

The controller is housed in a plastic box with a transparent door with a degree of protection IP-66, which allows its installation in damp areas.



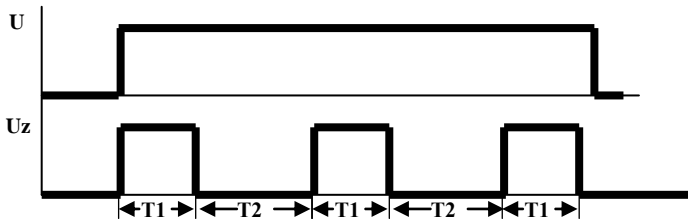
1. "**Time**" indicator - a two-digit digital indicator for displaying the time with reading from 00 - 99.
2. "**Prog**" indicator - a digital indicator for displaying the operating mode and time unit, such as: **II** - seconds; **I** - minutes; **h** - hours
3. The indicator shows the backwashing of the filter.
4. "**Prog** ✓" button - enter programming mode and enter data into memory.
5. "**Set**" button - select operating mode, time range and time interval in programming mode.
6. "**Restart**" button - restarts the controller or starts the Automatic mode after setting.

IV. Functions and programming

Automatic mode

With turning on the power starts the backwash time **T1**.

Periodically turns the backwash magnets on and off for different, recurring periods of time (Repeatedly repeated delay cycle). The time delay cycle starts when the supply voltage **U** is applied to the controller. Washing is performed for the programmed time **T1** and terminated for the programmed time **T2**.



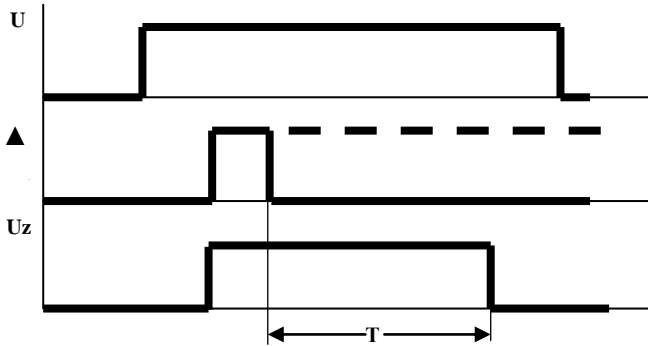
Automatic mode programming:

- Press and hold for more than 5 seconds. "**Prog / Enter**" button - "**Prog**" indicator flashes and two continuous beeps are heard;
- Press the "**Set**" button to select letter **A**;
- Press the "**Prog** ✓" button to confirm the mode. On the "**Prog**" indicator the symbol \square for **T1** flushing time;
- Press the "**Prog** ✓" button to confirm. On the "**Prog**" indicator the time range symbol flashes;
Press the "**Set**" button until you select the desired range:
11 – sec.; **1** - minutes; **h** – hours
- Press the "**Prog** ✓" button to enter the selected range. On the "**Time**" indicator the first digit flashes;
- Press the "**Set**" button until the desired value is 0 - 9;
- Press the "**Prog** ✓" button to enter the selected value. The second digit flashes on the "**Time**" indicator;
- Press the "**Set**" button until the desired value is 0 - 9;
- • Press the "**Prog** ✓" button to enter the selected value. On the "**Prog**" indicator the symbol \square for time off **T2** starts flashing;
- • Press the "**Prog** ✓" button to confirm. On the "**Prog**" indicator the time range symbol flashes;
- Press the "**Set**" button until you select the desired range:
11 – sec.; **1** - minutes; **h** – hours
- Press the "**Prog** ✓" button to enter the selected range. On the "**Time**" indicator the first digit flashes;
- Press the "**Set**" button until the desired value is 0 - 9;
- Press the "**Prog** ✓" button to enter the selected value. The second digit flashes on the "**Time**" indicator
- Press the "**Set**" button until the desired value is 0 - 9;

- Press the "**Prog** ✓" button to enter the selected value. On the "**Prog**" indicator the letter for the selected mode **A** flashes;
- Press the "**Prog** ✓" button to save the selected settings. The Prog indicator stops flashing and three short beeps are heard;
- Press the "**Restart**" button to start Auto mode. After starting, the point begins to flash of the "**Time**" indicator, which shows the remaining time.

Manual mode.

The magnet valve opens to flush the filter by pressing the Set ▲ (Set) button and closes at the end of the time interval **T**.



Manual mode programming:

- Press and hold for more than 5 sec. "**Prog** ✓" button - "**Prog**" indicator flashes and two continuous beeps are heard;
- Press the "**Set**" button to select the letter **P**;
- Press the "**Prog** ✓" button to confirm the mode. On the "**Prog**" indicator the time range symbol flashes;
- Press the "**Set**" button until you select the desired range:
 11 – sec.; 1 – minutes; h – hours
- Press the "**Prog** ✓" button to enter the selected range; On the "**Time**" indicator the first digit flashes;
- Press the "**Set**" button until the desired value is 0 - 9;
- Press the "**Prog** ✓" button to enter the selected value. The second digit flashes on the "**Time**" indicator;
- Press the "**Set**" button until the desired value is 0 - 9;
- Press the "**Prog** ✓" button to enter the selected value. On the "**Prog**" indicator the letter for the selected mode **P** flashes;
- Press the "**Prog** ✓" button to save the selected settings. The "**Prog**" indicator stops flashing and three short beeps are heard.
- Press the "**▲**" button to start Manual mode.
- The "**Time**" indicator point flashes to indicate the remaining time.

After the interval has elapsed, a continuous beep sounds.

The controller is factory programmed with the following times:

- T1 backwash time - 60 sec.
- Backwash start time - 45 hrs.
- Manual actuation of the magnet valve - 60 sec.

The factory settings can be changed as described above.

V. Technical Specifications:

For the controller:

- Supply voltage 230V / AC
- Power supply to the solenoid valve 230V / AC
- Minimum wash time 1 sec.
- Maximum wash time 99 sec.
- Minimum backwash programming period 1 h
- Maximum backwash programming period 99 h
- / The specified times can also be programmed in minutes /*
- Ambient temperature from 0÷40°C
- Degree of protection IP-66

For magnet valve:

- Maximum inlet pressure 10 bar.
- Fluid temperature from 4÷80°C
- Tube connection ½ ”
- Maximum leakage rate of 4.8 m³ / h

VI. Warranty conditions

The warranty period is 24 months following the purchase date of the unit or its installation by an authorized Engineering Company, but not exceeding 28 months after the production date. The warranty is extended to the malfunctions that occur during the warranty period and are result of the production reasons or defective used parts.

The warranty does not relate to malfunctions corresponding to not-qualified installation, activities directed to the product body interference, not regular storage or transport. The repairs during the warranty period can be done after correct filling of the manufacturer warranty card

Warranty Card

Manufacturer: INTIEL	
<i>Product type</i>	CONTROLLER FOR AUTOMATIC CLEANING OF WATER FILTERS AQUA FILTER - INT010
<i>Production number</i>	
<i>Production date</i>	
Dealer confirmation	
<i>Purchase date</i>	
<i>Invoice number</i>	
<i>Dealer's name, address and stamp</i>	
<i>Seller's name and signature</i>	